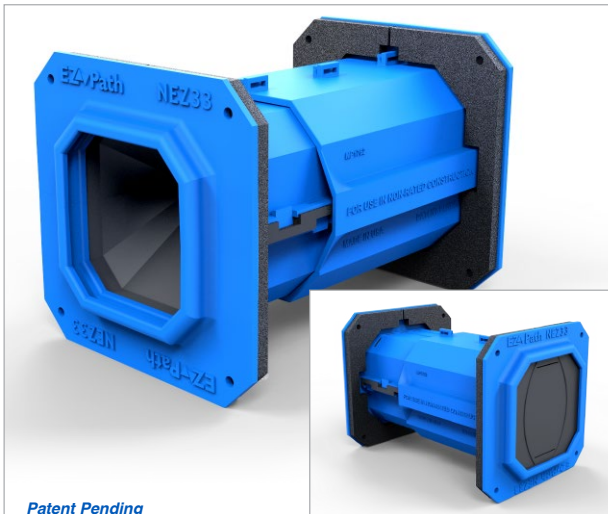


**NEW! EZ-Path® Smoke & Acoustical Pathway****The Zero-Maintenance Cable Management Solution For Smoke Partitions & Non-Rated Construction**

Manage and protect your cables. Clean up your walls. Say goodbye to unsightly holes that transmit smoke, noise and odor.

This new addition to the EZ-Path® family will improve the way cables are pulled through barriers. The original EZ-Path® Fire Rated Pathway is the perfect choice for fire-rated construction (including smoke barriers, a particular type of smoke resistant barrier that carries a fire rating). The new EZ-Path® Smoke & Acoustical Pathway can be used throughout the rest of the non-rated barriers (including smoke partitions, a non-rated smoke resistant construction). Eliminate metal sleeves, protect sensitive cables, make easy cable moves, additions and changes without the need to remove or replace sealant, putty or foam, or open and close a sleeve with the EZ-Path® System.

**For Non-Rated Construction:** EZ-Path® Smoke & Acoustical Pathway allows for easy, smooth cable changes while offering maximum cable protection and management. In addition to air, environmental and smoke sealing, the EZ-Path® Smoke & Acoustical Pathway offers exceptional acoustical performance while maintaining a clean, engineered appearance.

**For Smoke Partitions:** EZ-Path® Smoke & Acoustical Pathway allows for easy, smooth cable changes without the need for caulk or putty while maintaining excellent acoustical performance. Managing and protecting your cables in smoke partitions is now easier than ever thanks to its clean, engineered design and easy installation!

**APPLICATIONS**

The newest member of the EZ-Path® family offers many great features and benefits across a variety applications

|                 | - HEALTHCARE -   | - BUSINESSES -  | - DATA CENTERS -   | - EDUCATION -  |
|-----------------|--|---|--|--|
| <b>BENEFITS</b> | <ul style="list-style-type: none"> <li>» Acoustical sealing protects patient privacy</li> <li>» Infection control through automatic sealing and remote cable pulls that disrupt less ceiling tiles</li> <li>» Perfect product for smoke sealing in smoke partitions</li> </ul> | <ul style="list-style-type: none"> <li>» Acoustical sealing between offices or conference rooms</li> <li>» Environmental sealing to maintain indoor air quality and reduce odor transmission</li> </ul> | <ul style="list-style-type: none"> <li>» Control of air flow</li> <li>» Smoke sealing in non-rated partitions</li> </ul> | <ul style="list-style-type: none"> <li>» Acoustical sealing in classrooms</li> <li>» Environmental sealing to maintain indoor air quality and reduce odor transmission</li> <li>» Smoke sealing in non-rated partitions</li> </ul> |

**FEATURES & BENEFITS**

- » Cable Management by use, type and vendor
- » Zero Maintenance - easy moves, adds and changes
- » Excellent Acoustical Performance; Low Smoke Leakage Ratings
- » Easy to install - can be installed horizontally and vertically
- » Retrofittable – retrofit kit comes split apart for old work
- » Clean, engineered appearance
- » Pathways can be ganged for additional capacity
- » Pathway adjusts to accommodate wall and floor thicknesses between 4" (102 mm) & 8" (203 mm)



### PHYSICAL PROPERTIES

|   |   |
|---|---|
| Shell Composition                             | V-0 High Impact ABS/PC Thermoplastic        |
| Seal & Curtain                                | Flame Retardant Neoprene Rubber             |
| Cable Loading Area                            | 6.7 in <sup>2</sup> (43.2 cm <sup>2</sup> ) |
| Allowable Cable Fill                          | 0 - 100%                                    |
| Wall Area Required (ft <sup>2</sup> / Device) | .167 ft <sup>2</sup>                        |
| In-Service Temp.                              | -30°F - 130°F (-34°C - 54°C)                |

### PERFORMANCE

| Max Cable Loading (Visual Fill)   | L Rating (CFM/Device) |
|---|-----------------------|
| 0%  | < 1                   |
| 100%  | < 2.5                 |
| <b>Note:</b> L Ratings Tested According to Air Leakage Test Procedure As Outlined in UL1479 without a Fire Test. <b>DEVICE NOT SUITABLE FOR USE IN FIRE RATED BARRIERS.</b> |                       |
| Plenum tested to UL2043 (Horizontal Installations Only)   |                       |
| <b>Sound Transmission Classification (STC)</b><br>tested per ASTM E90   |                       |
| <b>61</b>   |                       |

### ORDERING INFORMATION

| UPC#<br>730573 | Cat. No. | Description   | Qty. | Case Qty. | Weight (Ea.)       |
|----------------|----------|---|------|-----------|--------------------|
| 11158          | NEZ33    | EZ-Path® Smoke and Acoustical Pathway (Device Only)   | 1    | 4         | 1.20 lbs (0.54 kg) |
| 11159          | NEZDP233 | EZ-Path® Smoke and Acoustical Pathway Two Gang Kit (2 NEZ33 Pathways & 2 NEZP233 Two Gang Plates)   | 1    | N/A       | 4.00 lbs (1.81 kg) |
| 11160          | NEZDP433 | EZ-Path® Smoke and Acoustical Pathway Four Gang Kit (4 NEZ33 Pathways & 2 NEZP433 Four Gang Plates) | 1    | N/A       | 6.90 lbs (3.13 kg) |
| 11161          | NEZP233  | EZ-Path® Smoke and Acoustical Pathway Two Gang Plate Kit (Plates Only)                              | 1    | N/A       | 0.81 lbs (0.36 kg) |
| 11162          | NEZP433  | EZ-Path® Smoke and Acoustical Pathway Four Gang Plate Kit (Plates Only)                             | 1    | N/A       | 1.00 lbs (0.45 kg) |

**From 1 cable to 5,000. Fire-Rated Construction to Non-Rated Construction. The EZ-Path® System has you covered.**



**FIRE-RATED CONSTRUCTION**

**NON-RATED CONSTRUCTION**

LIMITED WARRANTY: STI warrants that its products will be free of defects for one year from the date of purchase. In the event a product does not conform to this warranty, the sole and exclusive remedy is, at STI's option, replacement of the product or refund of the purchase price. The warranty provided herein shall be void and of no effect in the event that the product is not installed in accordance with STI's published instructions, listed systems and applicable building and safety codes. THIS WARRANTY IS IN LIEU OF ALL OTHER REPRESENTATIONS AND EXPRESSED OR IMPLIED WARRANTIES (including the implied warranties of merchantability or fitness for a particular use) AND UNDER NO CIRCUMSTANCES SHALL STI BE LIABLE FOR ANY DIRECT, INDIRECT, SPECIAL, INCIDENTAL OR CONSEQUENTIAL DAMAGES OR LOSSES, INCLUDING, WITHOUT LIMITATION, ANY LOSS OF REVENUE, PROFIT OR USE. Prior to use, the user shall determine the suitability of the product for its intended use, and the user assumes all risks and liability for subsequent use. No person other than an officer of STI is authorized to bind STI to any other warranty for any product for which this warranty is issued.

MADE IN THE USA – COPYRIGHT © 2014 SPECIFIED TECHNOLOGIES INC.