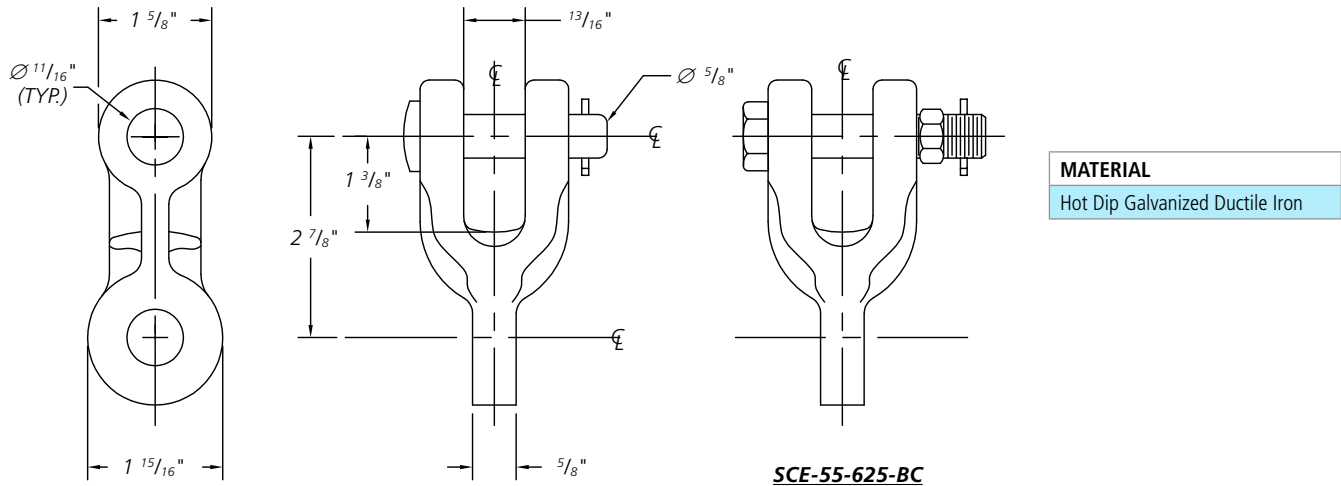


### Standard Clevis Eye

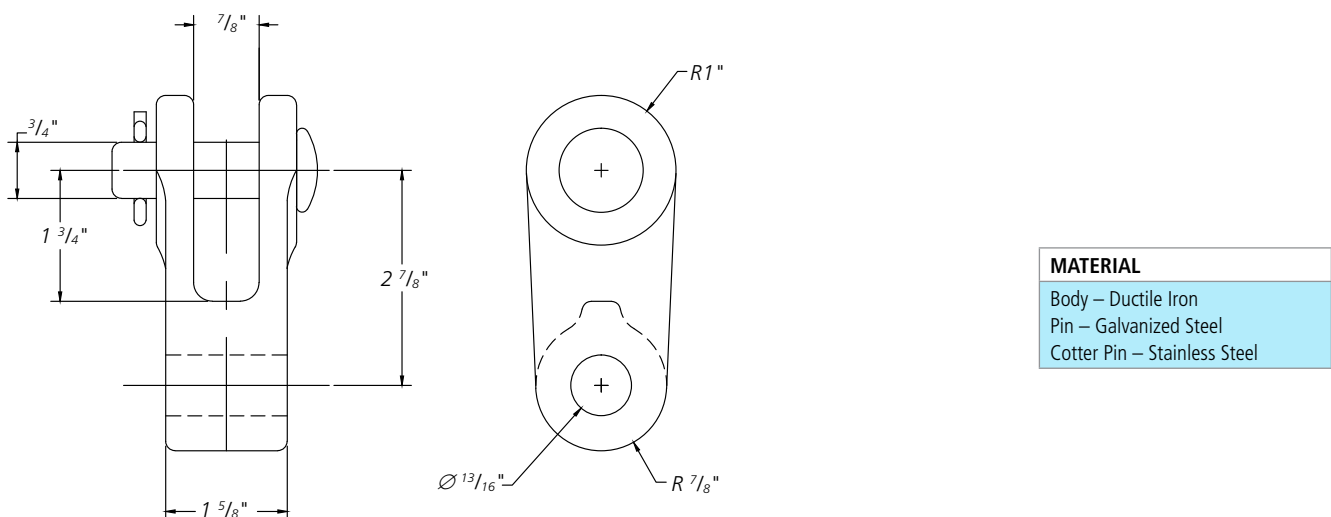


#### Ordering Information

AFL NO.	ULTIMATE STRENGTH (LBS.)	APPROX. WEIGHT EACH (LBS.)	APPLICATION
SCE-55-625	25,000	1.35	HIBUS Double Suspension

**NOTE:** For Bolt, Nut and Cotter instead of Clevis Pin and Cotter, add suffix "-BC" to AFL number.

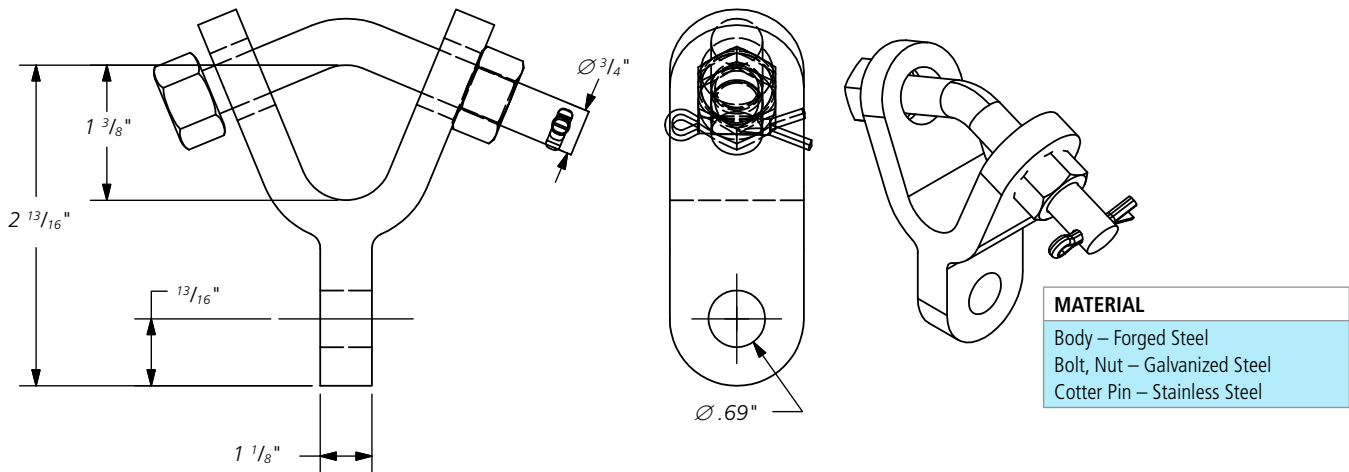
### Clevis Eye



#### Ordering Information

AFL NO.	ULTIMATE STRENGTH (LBS.)	APPROX. WEIGHT (LBS.)	APPLICATION
CE-SC	35,000	1.7	Mechanical Double Suspension

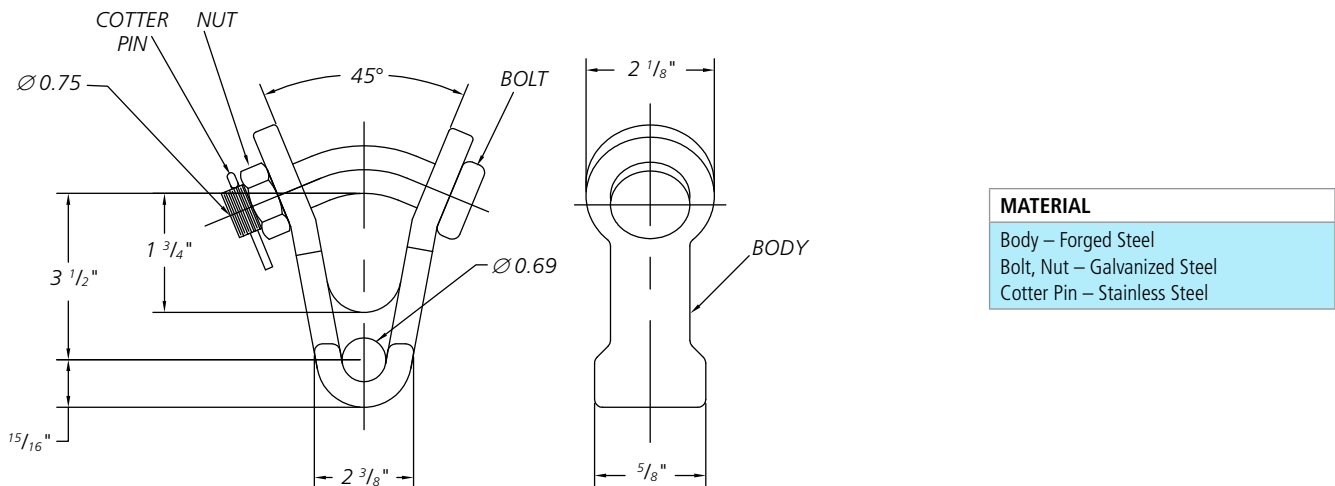
### Y Clevis Eye



### Ordering Information

AFL NO.	ULTIMATE STRENGTH (LBS.)	APPROX. WEIGHT (LBS.)
YCE-690-1125	30,000	2.0

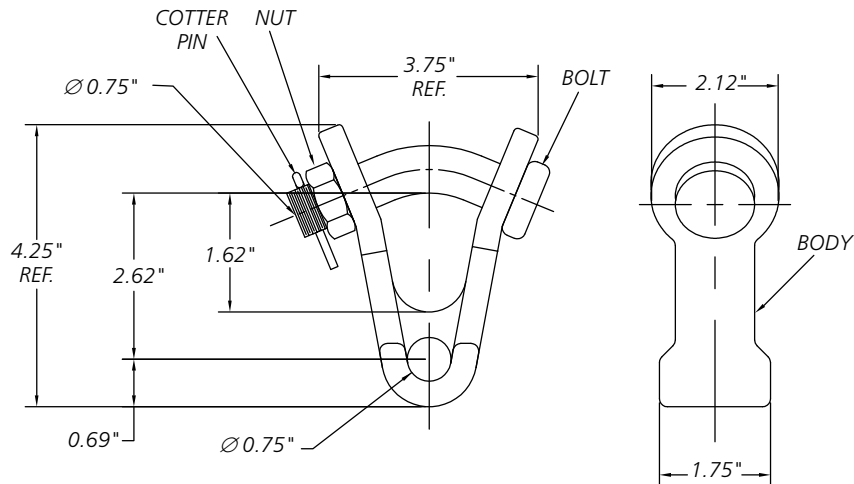
### Y Clevis Eye 90°



### Ordering Information

AFL NO.	ULTIMATE STRENGTH (LBS.)	APPROX. WEIGHT (LBS.)	APPLICATION
YCE-65-625A	30,000	2.2	HIBUS Suspension

### Y Clevis Eye 90°

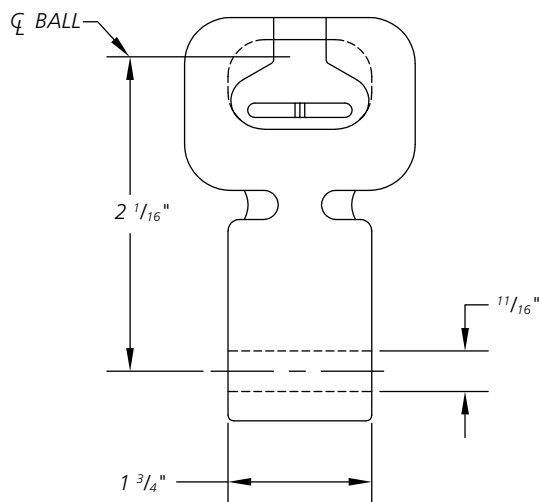


MATERIAL
Body – Forged Steel
Bolt, Nut – Galvanized Steel
Cotter Pin – Stainless Steel

#### Ordering Information

AFL NO.	ULTIMATE STRENGTH (LBS.)	APPROX. WEIGHT (LBS.)	APPLICATION
YC90E-750-1750	30,000	2.4	Mechanical Suspension

### Socket Eye

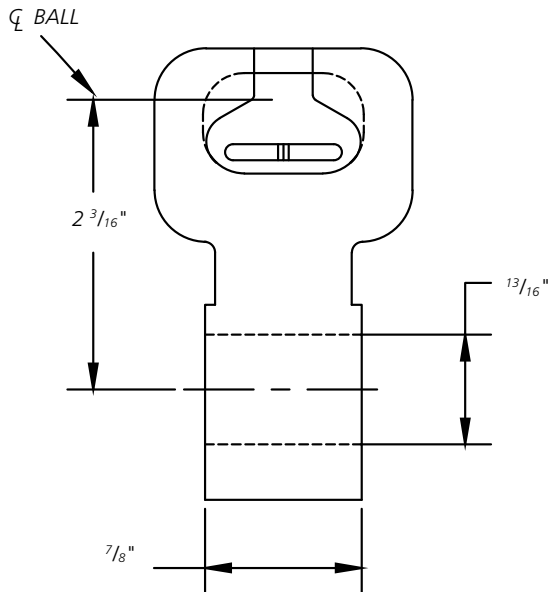


MATERIAL
Body, Clevis Bolt – Galvanized Steel
Cotter Pin – Stainless Steel

#### Ordering Information

AFL NO.	ULTIMATE STRENGTH (LBS.)	APPROX. WEIGHT EACH (LBS.)
SE-SC	30,000	1.80

## Socket Eye



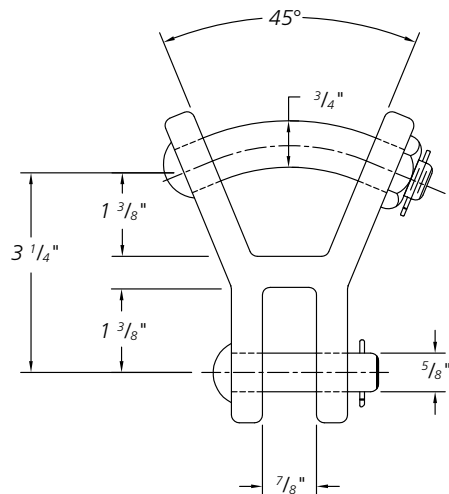
### MATERIAL

Galvanized Ductile Iron

### Ordering Information

AFL NO.	ULTIMATE STRENGTH (LBS.)	APPROX. WEIGHT EACH (LBS.)
SE-BDE	30,000	1.21

## Y Clevis Clevis



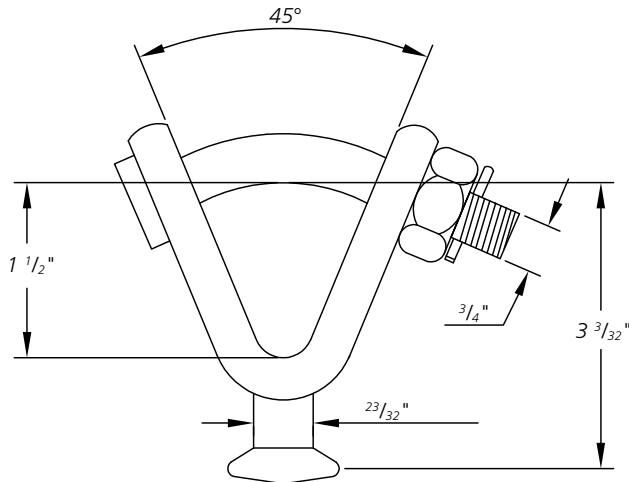
### MATERIAL

Body – Galvanized Ductile Iron  
Hardware – Galvanized Steel

### Ordering Information

AFL NO.	ULTIMATE STRENGTH (LBS.)	APPROX. WEIGHT (LBS.)	APPLICATION
YCC	30,000	2.50	HIBUS Double Suspension and Mechanical Double Suspension

## Ball Y Clevis



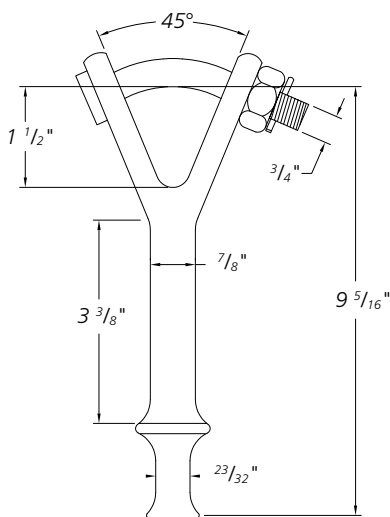
### MATERIAL

Body, Clevis Bolt – Galvanized Steel  
Cotter Pin – Stainless Steel

### Ordering Information

AFL NO.	ULTIMATE STRENGTH (LBS.)	APPROX. WEIGHT EACH (LBS.)
YCBS	30,000	1.90

## Hot Line Y Clevis Ball



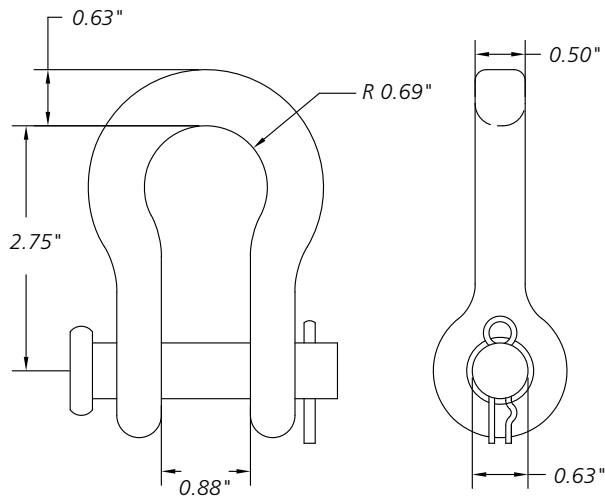
### MATERIAL

Body, Clevis Bolt – Galvanized Steel  
Cotter Pin – Stainless Steel

### Ordering Information

AFL NO.	ULTIMATE STRENGTH (LBS.)	APPROX. WEIGHT EACH (LBS.)
YCBHL	30,000	2.80

### Anchor Shackle



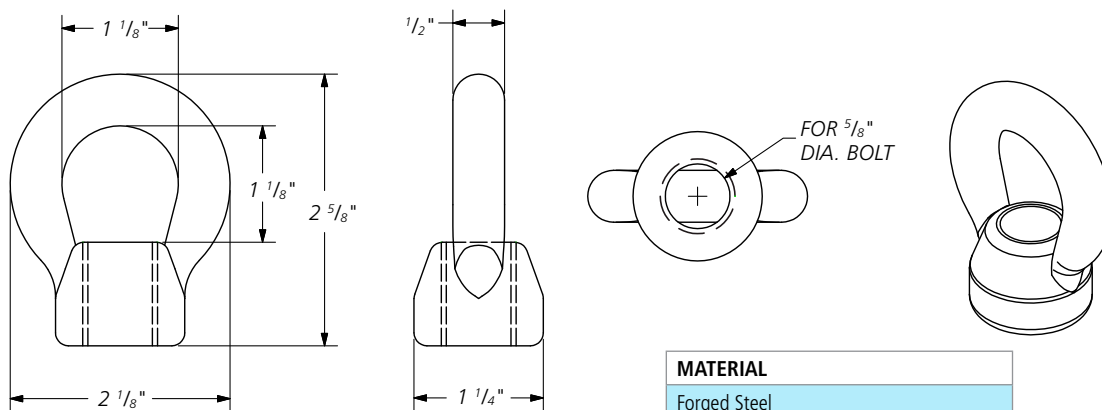
#### MATERIAL

Body – Galvanized Steel  
Bolt, Nut – Galvanized Steel  
Cotter Pin – Stainless Steel

#### Ordering Information

AFL NO.	ULTIMATE STRENGTH (LBS.)	APPROX. WEIGHT EACH (LBS.)
ANSH30L	30,000	1.1

### Oval Eye Nut



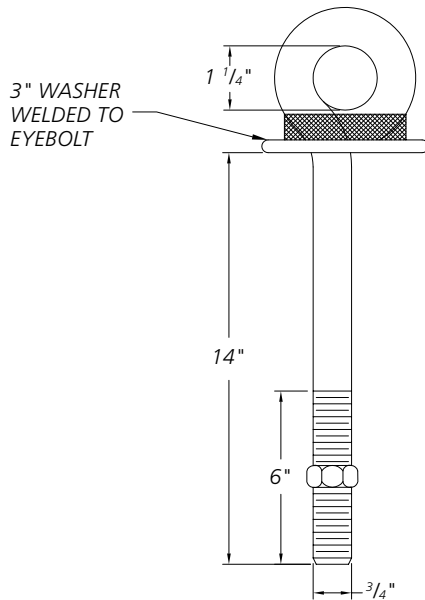
#### MATERIAL

Forged Steel

#### Ordering Information

AFL NO.	ULTIMATE STRENGTH (LBS.)	APPROX. WEIGHT EACH (LBS.)
PSM00221	12,400	.46

### Shoulder Eye Bolt



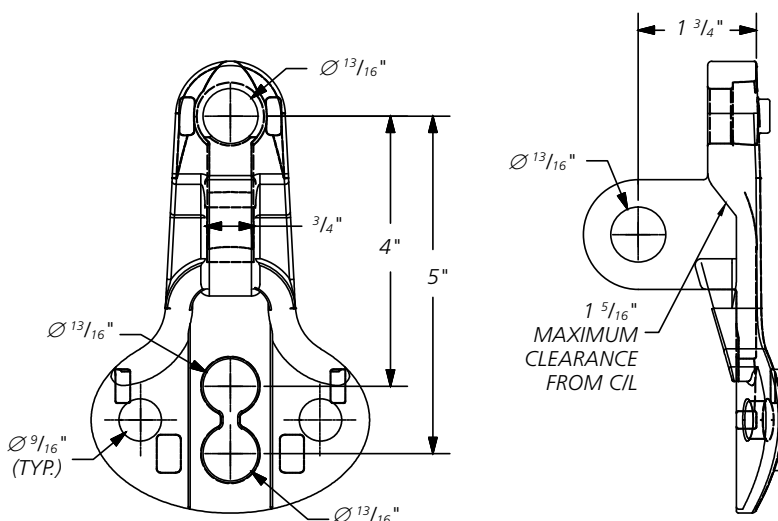
#### MATERIAL

Eyebolt – Galvanized Steel  
Nut – Stainless Steel

#### Ordering Information

AFL NO.	MINIMUM TENSILE STRENGTH (LBS.)	APPROX. WEIGHT PER 100 PIECES (LBS.)
SEB-3/4-14	18,350	320

### Pole Eye Plate



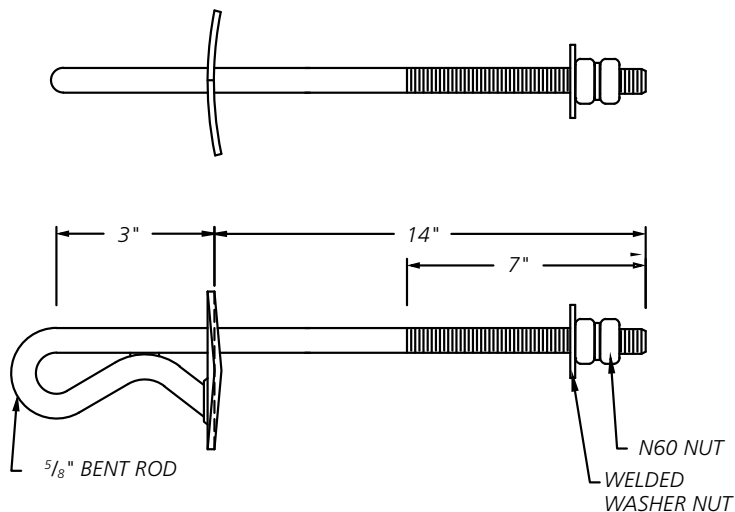
#### MATERIAL

Hot Dip Galvanized Ductile Iron

#### Ordering Information

AFL NO.	ULTIMATE STRENGTH (LBS.)	APPROX. WEIGHT EACH (LBS.)
EP1	21,000	2.2

### Shield Wire Support



#### MATERIAL

Galvanized Steel

### Ordering Information

AFL NO.	ULTIMATE STRENGTH (LBS.)	APPROX. WEIGHT PER BOX OF 4 PIECES (LBS.)
SFOSB-WP-14	5,000	2.50