



TF 1600

Standalone Outdoor Fingerprint
Reader Controller

IP65 rated Fingerprint Access Control Reader



Biometric Performance:

Reliable, durable and highly accurate ZK fingerprint sensor with latest fingerprint matching algorithm which provides less than 1.5 second user recognition.



Communication:

TF1600 installs easily on your network having both Ethernet and RS232/485 serial ports. Weigand-OUT port allows connection of reader to ZK or any 3rd party access control panel. Using Weigand-IN port you connect to any card reader for dual factor authentication.



Easy Operation and Management:

Complete setup and programming can be done via enrollment reader and software. Audio-Visual Indication for acceptance and rejection of valid/invalid fingerprints and cards.



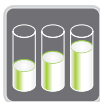
Full Access Control Built In:

Relay Outputs for electric lock and alarm. Inputs for door status sensor and request to exit hardware. Supports multiple timezones and personnel groups for programming valid entry zones.



Waterproof Enclosure:

IP65 rated waterproof enclosure permits this reader to be used for outdoor applications. The cables and connectors are epoxy sealed at the back of the reader. Internal heating mechanism keeps the warm in low temperature environment.



Capacity:

Can store up to 3,000 fingerprint templates, 30,000 cards and 100,000 transactions. The data can be backed up to a USB Flash Disk and can also be transferred to another reader in the absence of computer connectivity.



Options:

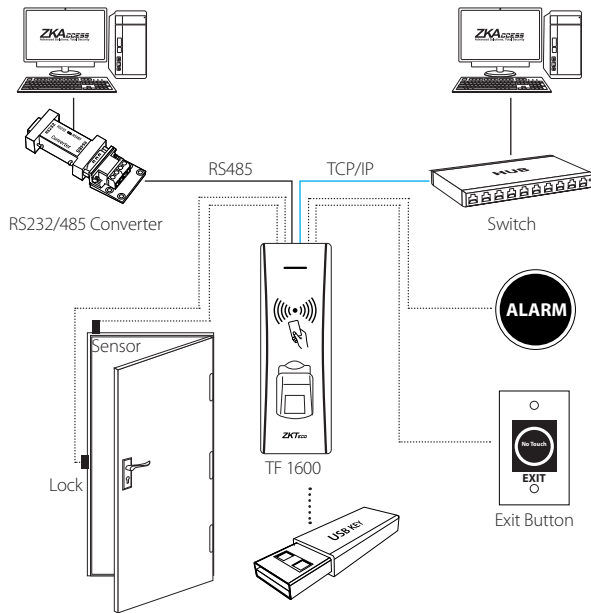
Internal Proximity Card or Mifare Card reader allows dual factor authentication for access control.



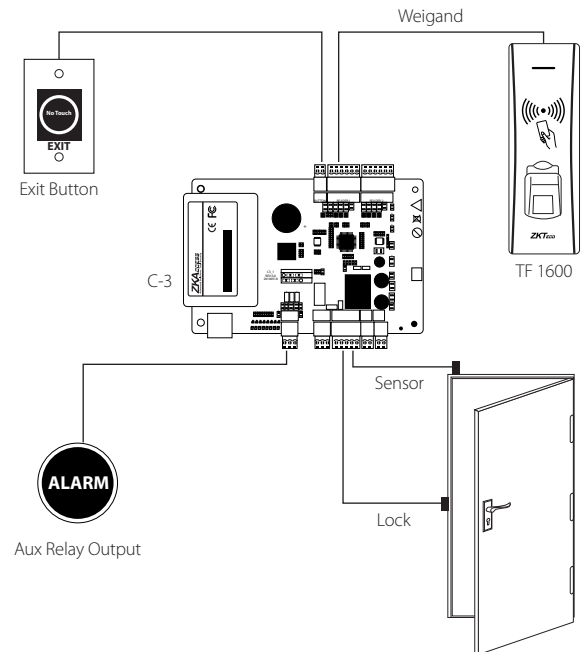
For Software Developers:

Free SDK and development tools are available for developers/partners who wish to integrate TF1600 with any application which requires verifying people.

Standalone Installation



Installation with Access Control Panel



Specifications

Capacity

Fingerprint: 3,000 templates

Cards: 30,000 transactions

Transactions: 100,000 logs

Access Control Interface

3rd party electric lock, door sensor, exit button, alarm, door bell

Communication

Ethernet, RS 232, RS485, Weigand Input and Output

Power

12V DC, 3A

Environment

Operating Temperature:
-40° to 113° F (-40° to 45° C)

Dimensions

Height: 7.28 in (18.5cm)

Width: 2.46 in (6.25 cm)

Length: 1.63 in (4.15 cm)

Weight: 0.80 lbs (0.36kg)

Supported Card Formats

ID Card

Mifare Card

Part Numbers

TF 1600

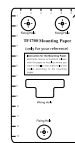
TF 1600-ID with Proximity card reader

TF 1600-M with Mifare card reader

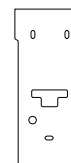
What's in the Box



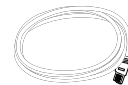
TF 1600



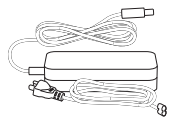
Installation Template



Back Plate



Network Cable



AC Power Adapter



Cables



Diode



Screws



Screwdriver



Design and Specifications subject to change without notice

ZKAccess

201 Circle Drive North, Suite 116

Piscataway, NJ 08854, USA

Tel: +1 732-412-6007

Fax +1 732-412-6008

sales@zkaccess.com

zkaccess.com

ZKAccess-division of ZKTeco