

Closet Connector Housings (CCH)

A LANscape®
Solutions Product

features and benefits |

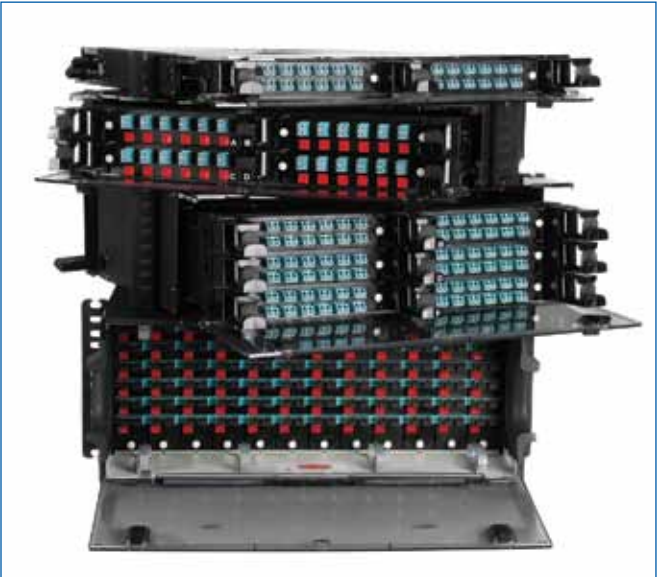
Interconnect and cross-connect capability	Ideal for field connectorization
Removable, translucent top covers (1U, 2U, 3U), removable rear cover (4U)	Visibility and ease of access for installation, testing and troubleshooting
Internal and external strain-relief options	Flexibility for installation and moves, adds and changes (MACs)
Accepts panels, modules and cassettes	Variety of field termination options
Adaptable to use as a modular splice housing	Splices are stored and protected in same footprint

Designed based on thousands of hours of customer feedback, Corning Cable Systems Closet Connector Housings (CCHs) offer more than two dozen innovative features that make installation and troubleshooting of fiber optic connectivity faster, easier and more cost-effective. From fiber and cable routing and strain relief, to port labeling and termination, these housings reduce the risk of error that can disrupt networks.

Closet Connector Housings

Corning Cable Systems Closet Connector Housings (CCHs) provide interconnect or cross-connect capabilities between outside plant, riser or distribution cables and opto-electronics. Like all LANscape Solutions hardware, the housings accept CCH connector panels. In addition, the housings accept CCH cassettes and CCH modules.

(continued)



Corning Cable Systems CCH Hardware Includes the CCH-01U, CCH-02U, CCH-03U, CCH-04U | Photo LAN2511



CCH-01U with Translucent Top (Covers Partially Open) | Photo LAN2337

Closet Connector Housings (CCH)

A LANscape®
Solutions Product

The units are designed for rack mounting in 19-in (48 cm) racks or optional 23-in (58 cm) equipment racks (1.75-in EIA hole spacing). They are available in rack space options of 1U (two panels, cassettes or modules), 2U (four panels, cassettes or modules), 3U (six panels, cassettes or modules) and 4U (twelve panels, cassettes or modules). The 1U, 2U and 3U options feature a slide-out tray and see-through, removable top covers. The CCH-04U features a clear door, removable front and rear enclosures and a platinum-colored interior for maximum visibility and access.

Documentation labels are provided and components can be added as needed to construct a fiber distribution frame for any application. All housings include a removable tinted polycarbonate front door. All size housings have field-installable lock kits available for both front and rear doors.

Every CCH housing is shipped complete with strain-relief brackets, routing clips and guides, and mounting brackets for proper installation.

CCH Cassettes

CCH cassettes enable fast field termination and easy modular management of connectorization within the housing.

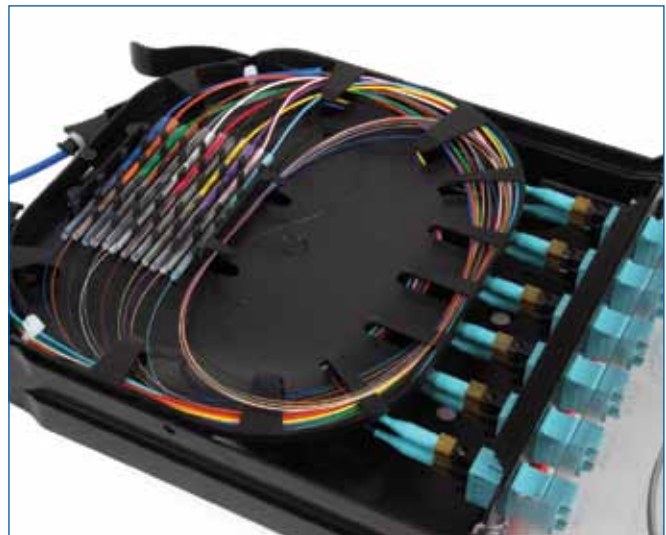
The CCH splice cassette supports fusion splicing of individual or ribbon fibers, with heat shrinks, pigtail slack and cable slack managed within a single space-saving footprint. This eliminates the need for individual splice trays or separate splice housings, as well as allowing splicing to be done away from the rack housing in a suitable workspace as needed. The modular design makes it easy to access the fiber in an individual cassette without disturbing other fibers in the housing. A CCH panel with the desired adapter configuration can be ordered separately and fits easily into the cassette.

A fully pigtailed splice cassette option and a slack cassette option, suitable for use with field-installable connectors, are also available. The pigtailed cassettes have 900 micron protected fiber pigtails routed into the splice tray layer, where it transitions to either 250 micron fiber or bare ribbon, depending on the splicing method desired.

Every CCH cassette is shipped with heat shrinks and all mounting accessories required for use inside the housings.



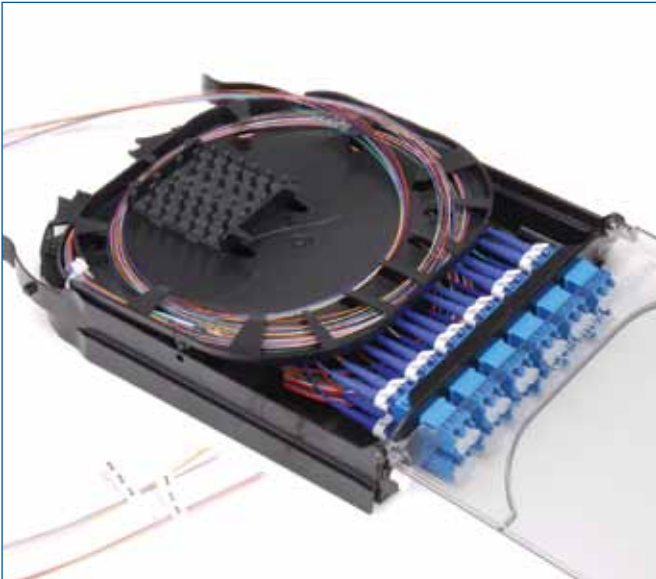
CCH-03U Installed with Splice Cassettes
| Photo LAN2519



CCH Splice Cassette Fully Installed with Heat Shrinks and 900 µm Fiber | Photo LAN2528

Closet Connector Housings (CCH)

A LANscape®
Solutions Product



CCH Pigtailed Splice Cassette | Photo LAN2593



CCH-04U Installed with CCH Connector Panels
(Sold Separately) | Photo LAN2616

specifications |

	Dimensions (H x W x D) cm (in)	Shipping Weight kg (lb)
CCH-01U	4.4 x 48 x 43 (1.75 x 19 x 17)	5.0 (11.0)
CCH-02U	8.9 x 48 x 43 (3.5 x 19 x 17)	6.5 (14.2)
CCH-03U	13.3 x 48 x 43 (5.25 x 19 x 17)	7.75 (17.0)
CCH-04U	17.8 x 48 x 43 (7 x 19 x 17)	8.0 (17.6)
CCH-CS	16.2 x 3.5 x 20 (6.4 x 1.4 x 7.9)	0.5 (1)
CCH-CF	16.2 x 3.5 x 20 (6.4 x 1.4 x 7.9)	0.5 (1)
Multimode Pigtail Cassettes		
Loss	0.35 dB typical (all fibers) at 1300 nm, 0.5 dB max*	
Single-Mode Pigtail Cassettes		
Loss	0.15 dB typical (all fibers) at 1310 nm, 0.4 dB max*	

*0.3 dB max for single-mode LC UPC connectors; 0.5 dB max for single-mode MT-RJ connectors

Closet Connector Housings (CCH)

A LANscape®
Solutions Product

ordering information |

Part Number	Description
Housings	
CCH-01U	Closet Connector Housing; accepts up to 2 CCH panels, cassettes or modules; comes with blank panels and hardware to strain-relieve cables internally or externally
CCH-02U	Closet Connector Housing; accepts up to 4 CCH panels, cassettes or modules; comes with blank panels and hardware to strain-relieve cables internally or externally
CCH-03U	Closet Connector Housing; accepts up to 6 CCH panels, cassettes or modules; comes with blank panels and hardware to strain-relieve cables internally or externally
CCH-04U	Closet Connector Housing; accepts up to 12 CCH panels, cassettes or modules; comes with blank panels and hardware to strain-relieve cables internally or externally
<i>If you need the previous CCH housing (pre-January 2012), use the following part numbers (see LAN-1392-EN):</i>	
CLSSC-01U	Classic Closet Connector Housing; accepts up to 2 CCH panels; comes with blank panels and hardware to strain relieve 1 cable with the universal cable clamp (UCC) or up to (5) 0.4 in or smaller cables with the UCC insert. Does not accept CCH cassettes.
CLSSC-02U	Classic Closet Connector Housing; accepts up to 4 CCH panels; comes with blank panels and hardware to strain relieve 1 cable with the universal cable clamp (UCC) or up to (5) 0.4 in or smaller cables with the UCC insert. Does not accept CCH cassettes.
CLSSC-03U	Classic Closet Connector Housing; accepts up to 6 CCH panels; comes with blank panels and hardware to strain relieve 1 cable with the universal cable clamp (UCC) or up to (5) 0.4 in or smaller cables with the UCC insert. Does not accept CCH cassettes.
CLSSC-04U	Classic Closet Connector Housing; accepts up to 12 CCH panels; comes with blank panels and hardware to strain relieve 1 cable with the universal cable clamp (UCC) or up to (5) 0.4 in or smaller cables with the UCC insert. Does not accept CCH cassettes.
CCH Cassettes	
CCH-CS	CCH Splicing Cassette; accepts 1 CCH Panel and up to 24 single-fiber or 6 ribbon heat-shrink splice protectors; comes with 12 single-fiber heat-shrink splice protectors, grommets and cable ties for strain relief, protective braided tubing, 1 rail for use with CCH-01U/2U/3U housings, and 2 rails used with CCH-04U housings
CCH-CF	CCH Slack Storage Cassette; accepts 1 CCH Panel and provides modular slack storage for direct factory or field termination of incoming (e.g., distribution) cables; comes with grommets and cable ties for strain-relief, protective braided tubing, 1 rail for use with CCH-01U/2U/3U housings, and 2 rails used with CCH-04U housings
Pigtailed Splice Cassettes	CCH Splicing Cassette (CCH-CS) loaded with CCH panel and factory-terminated pigtails. Available with ribbon or single-fiber splicing configurations. Includes appropriate number and type of heat shrinks and protective tubing depending on fiber count and cable type. See matrix on the next page to build your part number.

Closet Connector Housings (CCH)

A LANscape®
Solutions Product

ordering information |

CCH Pigtailed Splice Cassettes

CCH - CS	<input type="checkbox"/> <input type="checkbox"/>	-	<input type="checkbox"/> <input type="checkbox"/>	-	P00	<input type="checkbox"/> <input type="checkbox"/>
	1		2			3 4

|1

Select fiber count.

06 = 6 fibers
08 = 8 fibers
12 = 12 fibers
16 = 16 fibers
24 = 24 fibers

See Note 1

|3

Select fiber type.

K = 625 µm multimode (OM1)
B = 50 µm multimode (OM2)
T = 50 µm multimode (OM3)
Q = 50 µm multimode (OM4)
R = Single-mode (OS2)

Note:

1) Fiber count for desired adapter is available in table on following page

|2

Select adapter code
(see Adapter/Connector Code Options table on following page).

|4

Select splicing type.

E = Single fiber splicing
J = Ribbon splicing (only for fiber counts of 12 or 24)

Part Number	Description
-------------	-------------

Part Number Examples

CCH-CS12-59-P00RE	Closet Connector Housing Pigtail Cassette with 6 SC duplex single-mode adapters, with twelve SMF SC pigtails routed inside the cassette for single fiber splicing
CCH-CS24-E4-P00TE	Closet Connector Housing Pigtail Cassette with 12 LC duplex aqua OM3/4 adapters, with twenty-four OM3 LC pigtails routed inside the cassette for single-fiber splicing

Closet Connector Housings (CCH)

A LANscape®
Solutions Product

adapter/connector code options |

Adapter Code	Fiber Type	Alignment	Housing	Fiber/ Adapter	Available Fiber/Panel Counts				
					6	8	12	16	24
LC Duplex									
A8	62.5 µm multimode (OM1)	Ceramic	Composite	2	X	X	X	X	X
D3	50 µm multimode (OM2)	Ceramic	Composite	2	X	X	X	X	X
E4	50 µm multimode (OM3/4)	Ceramic	Composite	2	X	X	X	X	X
A9	Single-mode, UPC (OS2)	Ceramic	Composite	2	X	X	X	X	X
B3	Single-mode, APC (OS2)	Ceramic	Composite	2	X	X	X	X	X
SC Duplex									
91	62.5 µm multimode (OM1)	Metal	Composite	2	X	X	X		
G7	50 µm multimode (OM2)	Ceramic	Composite	2	X	X	X		
E7	50 µm multimode (OM3/4)	Ceramic	Composite	2	X	X	X		
59	Single-mode, UPC (OS2)	Ceramic	Composite	2	X	X	X		
D9	Single-mode, APC (OS2)	Ceramic	Composite	2	X	X	X		
SC									
56	62.5 µm multimode (OM1)	Metal	Composite	1	X	X	X		
G6	50 µm multimode (OM2)	Ceramic	Composite	1	X	X	X		
E6	50 µm multimode (OM3/4)	Ceramic	Composite	1	X	X	X		
3C	Single-mode, UPC (OS2)	Ceramic	Composite	1	X	X	X		
6C	Single-mode, APC (OS2)	Ceramic	Composite	1	X	X	X		
ST® Compatible Connector									
5T	62.5 µm multimode (OM1)	Ceramic	Metal	1	X	X	X		
G5	50 µm multimode (OM2)	Ceramic	Metal	1	X	X	X		
H3	50 µm multimode (OM3/4)	Ceramic	Metal	1	X	X	X		
6T	Single-mode, UPC (OS2)	Ceramic	Metal	1	X	X	X		
FC									
11	Single-mode, UPC (OS2)	Metal	Metal	1	X	X	X		
21	Single-mode, APC (OS2)	Metal	Metal	1	X	X	X		
MT-RJ, pinned									
97	62.5 µm multimode (OM1)	N/A	Composite	2		X	X	X	X
G1	50 µm multimode (OM2)	N/A	Composite	2		X	X	X	X
E1	50 µm multimode (OM3/4)	N/A	Composite	2		X	X	X	X
98	Single-mode, UPC (OS2)	N/A	Composite	2		X	X	X	X
Fiber Type		Housing Color							
62.5 µm multimode (OM1)		Beige							
50 µm multimode (OM2)		Black							
50 µm multimode (OM3/4)		Aqua							
Single-mode, UPC (OS2)		Blue							
Single-mode, APC		Green							

Note: For keyed LC ordering information, please refer to LAN-701-EN.

Closet Connector Housings (CCH)

A LANscape®
Solutions Product

ordering information | (continued)

Part Number	Description
Accessories	
Strain Relief	
UCC-001	Universal Cable Clamp Kit for use with external strain-relief bracket of CCH housings. Includes one UCC clamp and inserts for one cable up to 1.125-in diameter or up to five 0.4-in or smaller cables.
CPP-SSR-KIT	Central Member Strain-Relief Kit. Includes one clamp, washers, and screw to attach to CCH internal strain-relief bracket.
Mounting	
CCH1-RECESS-KIT-5	Includes 5 pairs of brackets to recess mount 5 CCH-01U housings
CCH2-RECESS-KIT-5	Includes 5 pairs of brackets to recess mount 5 CCH-02U housings
CCH3-RECESS-KIT-5	Includes 5 pairs of brackets to recess mount 5 CCH-03U housings
CCH4-RECESS-KIT-5	Includes 5 pairs of brackets to recess mount 5 CCH-04U housings
CCH4-3INCH-KIT-5	Includes 5 pairs of brackets to mount 5 CCH-04U housings with 3-in frontal projection (standard CCH-04U frontal projection is 5-in)
CDF-01U-23-BKT	23-in Mounting Brackets for the CCH-01U
CDF-02U-23-BKT	23-in Mounting Brackets for the CCH-02U
CDF-03U-23-BKT	23-in Mounting Brackets for the CCH-03U
CDF-04U-23-BKT	23-in Mounting Brackets for the CCH-04U
CDF-01U-24-BKT	24-in Mounting Brackets for the CCH-01U
CDF-02U-24-BKT	24-in Mounting Brackets for the CCH-02U
CDF-03U-24-BKT	24-in Mounting Brackets for the CCH-03U
CDF-04U-24-BKT	24-in Mounting Brackets for the CCH-04U
Miscellaneous	
FDC-CABLE-GRND	Armored Cable Grounding Kit; contains armored grounding clip and ground strap
CCHA-LOCK-KIT	CCH Hardware Lock Kit, compatible with CCH-01U, CCH-02U, CCH-03U, CCH-04U front and rear doors
CJP-01U	Closet Jumper Management Panel; provides jumper management in a 1.75-in rack space
CJP-02U	Closet Jumper Management Panel; provides jumper management in a 3.5-in rack space
CJP-03U	Closet Jumper Management Panel; provides jumper management in a 5.25-in rack space

Closet Connector Housings (CCH)

A LANscape®
Solutions Product

ordering information | (continued)

Part Number	Description
Replacement Parts	
Covers and Doors	
CCH1-TOP-COVER-2	Top Covers (2) for CCH-01U, CCH-02U and CCH-03U, with 2 label cards
CCH1-DOOR-FRONT	Front Door for CCH-01U, includes hinges and latches
CCH2-DOOR-FRONT	Front Door for CCH-02U, includes hinges and latches
CCH3-DOOR-FRONT	Front Door for CCH-03U, includes hinges and latches
CCH4-DOOR-FRONT	Front Door for CCH-04U, includes hinges and latches
CCH1-DOOR-REAR	Rear Door for CCH-01U, includes hinges and latches
CCH2-DOOR-REAR	Rear Door for CCH-02U, includes hinges and latches
CCH3-DOOR-REAR	Rear Door for CCH-03U, includes hinges and latches
CCH4-DOOR-REAR	Rear Door for CCH-04U, includes hinges and latches
Labeling	
CCH1-LABEL-CARD-20	Plastic Label Holder Cards for CCH-01U, CCH-02U, CCH-03U; 20 per pack
CCH4-LABEL-CARD-20	Plastic Label Holder Cards for CCH-04U; 20 per pack
CCHA-LABEL-PNL-50	Additional Adhesive Labels for the CCH; contains 50 labels
Strain Relief	
CCH1-STRN-INT	Internal Strain-relief Bracket for the CCH-01U, CCH-02U, CCH-03U
CCH1-STRN-EXT	External Strain-relief Bracket for the CCH-01U, CCH-02U, CCH-03U
CCH4-STRN-INT	Internal Strain-relief Bracket for the CCH-04U
CCH4-STRN-EXT	External Strain-relief Bracket for the CCH-04U
CCHA-CLIP-BTF-2	Transitional Strain-relief Clip for CCH-01U, CCH-02U, CCH-03U, CCH-04U; 2 per pack
Fiber and Cable Management	
CCH1-CASS-RAIL	1 Stacker Rail for CCH-01U, CCH-02U, CCH-03U; for use with CCH cassettes
CCH4-CASS-RAIL-24	Small Rails for CCH-04U; for use with CCH cassettes; 24 per pack
CCHA-CLIP-SLCK-8	Segregated Fiber Routing Clips for CCH-01U, CCH-02U, CCH-03U, CCH-04U; 8 per pack
CCH1-GUIDE-JMPR-3	Front Jumper Routing Guide for the CCH-01U, CCH-02U, CCH-03U; 3 per pack
CCH4-CLIP-JMPR-8	Front Jumper Routing Guide for the CCH-04U; 8 per pack
CCHA-CLIP-PNL-24	Panel Clips for the CCH-01U, CCH-02U, CCH-03U, CCH-04U; 24 per pack

Closet Connector Housings (CCH)

notes |

A LANscape®
Solutions Product

TRAINING | SPICE EQUIPMENT | TEST EQUIPMENT | SPICE CLOSURES | HARDWARE | CABLE ASSEMBLIES | CONNECTORS | CABLES | PRETERMINATED SYSTEMS

Closet Connector Housings (CCH)

A LANscape®
Solutions Product

notes |

Closet Connector Housings (CCH)

notes |

A LANscape®
Solutions Product

TRAINING | SPICE EQUIPMENT | TEST EQUIPMENT | SPICE CLOSURES | HARDWARE | CABLE ASSEMBLIES | CONNECTORS | CABLES | PRETERMINATED SYSTEMS

Closet Connector Housings (CCH)

A LANscape®
Solutions Product

notes |

Corning Cable Systems LLC • PO Box 489 • Hickory, NC 28603-0489 USA
800-743-2675 • FAX: 828-325-5060 • International: +1-828-901-5000 • www.corning.com/cablesystems

Corning Cable Systems reserves the right to improve, enhance and modify the features and specifications of Corning Cable Systems products without prior notification. LANscape is a registered trademark of Corning Cable Systems Brands, Inc. ST is a registered trademark of Lucent Technologies. All other trademarks are the properties of their respective owners. Corning Cable Systems is ISO 9001 certified. © 2012 Corning Cable Systems. All rights reserved. Published in the USA. LAN-1129-EN / March 2012