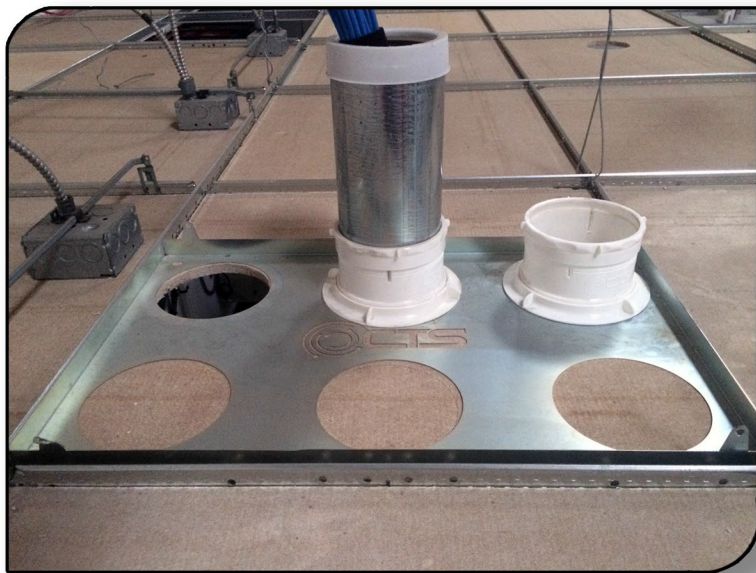


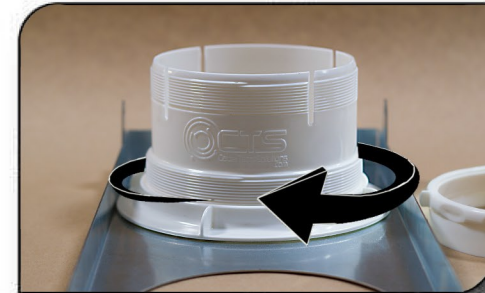


The CPP-4 Penetration System is designed to create a clean and visually pleasing opening for pass through cabling.



1) To start - lay the metal plate over the ceiling tile in the location you wish to install, remember to place the plate across the short length of the tile so the grid system is supporting the weight of the plate. Use the hole to draw a circle and then cut out the circular hole. In most cases, the ceiling grid will support the weight of the plate and tube. If the cabling is causing additional weight to the ceiling tile and grid system, the plate has tabs that can accommodate grid wire for additional support.

2) Remove the lock and compression rings and push the riser tube up through the hole in the ceiling tile and plate, the trim-ring will hide the rough edges. Twist the lock ring hand tight to sandwich the ceiling tile and plate together. The system will now be securely fastened.



3) Optional - The riser tube is equipped with a compression ring for 4" metal conduit. If the installation requires conduit, loosen the compression ring, slide the conduit into place and tighten the ring by hand until firm. CTS recommends the use of grid wire support when using conduit during the installation process.

